



NATIONWIDE CARE PLUS
COMMUNITY, AGED & DISABILITY SERVICES

Supported Independent Living

Find your new home



Easy English

This book is written in an easy to read way. We use pictures to explain ideas.



This book tells about our **SUPPORTED INDEPENDENT LIVING (SIL)**

In this book **WE** or **OUR** means **NATIONWIDE CARE PLUS**

SIL is a NDIS Support.



With SIL we support you to live in your own home.

You might live with other people with a disability.

Our homes have staff who can support you to;

- Do the things you want to do;
- Get out into the community; and
- Be more **independent**.

Independent means that you can do thing on your own or with less help.





Staff are people who work for Nationwide Care Plus.

We can help you find a home in our;

- Houses; or
- Apartments; or
- Villa.



Our homes are comfortable and safe. It is important that you get along with the people you live with.

Tell us what you;

- Like; and
- Do not like.

In a **housemate**



A **housemate** is a person you live with.

We will try to match you with people you will get along with.



Our staff will support you with daily tasks like;

Cleaning

Laundry

Cooking



Going to Appointment

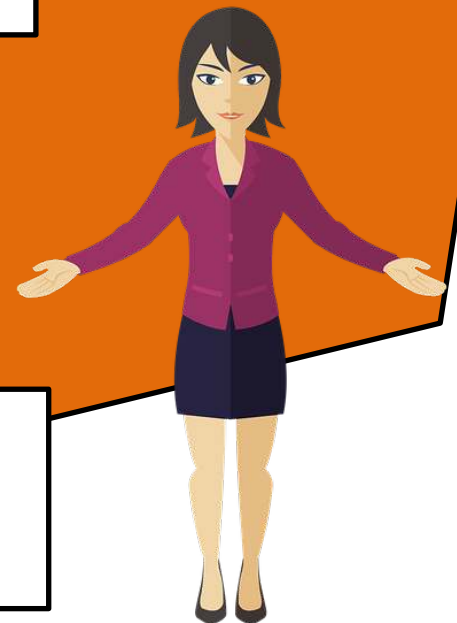
Personal Care



We can help you learn new hobbies and skills.



You can choose what you want to do.



If you live with other people ,
you will choose what happens
in your house together.

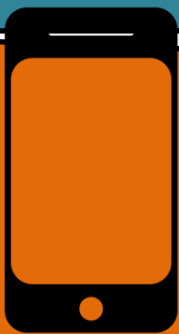


For more information about **Nationwide Care Plus** and **SIL**



Visit our website
www.nationwidecareplus.com.au

Phone
1300 81 81 56



Email
Info@nationwidecareplus.com.au

